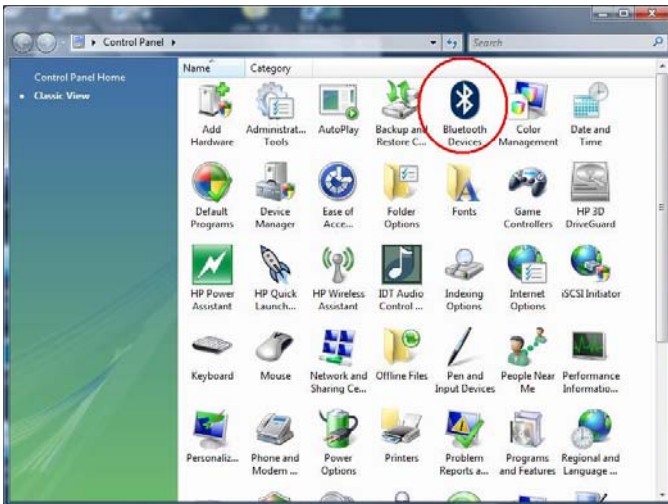


Pairing your BT-200 on Windows Vista & Windows 7

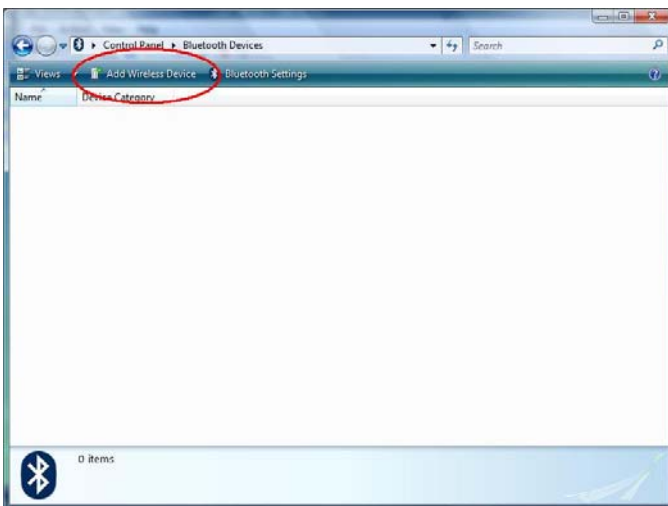
Installation of the BT-200 on a laptop that has integrated Broadcom Bluetooth.

Steps to install:

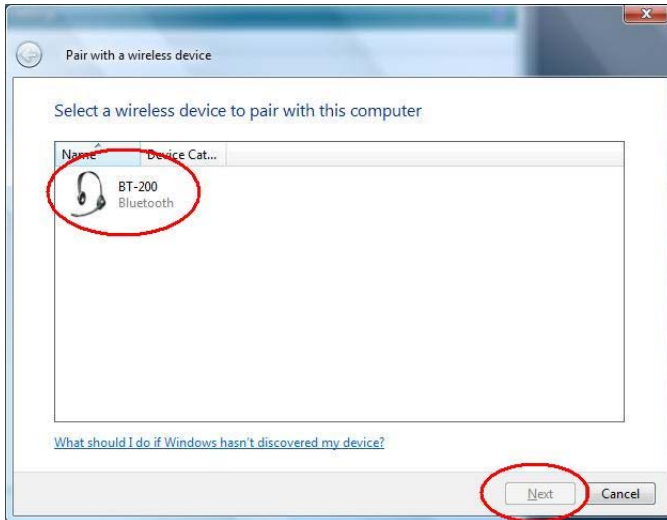
1. Click on “Start” and click on “Control Panel”.
2. Double-click on “Bluetooth Devices”.



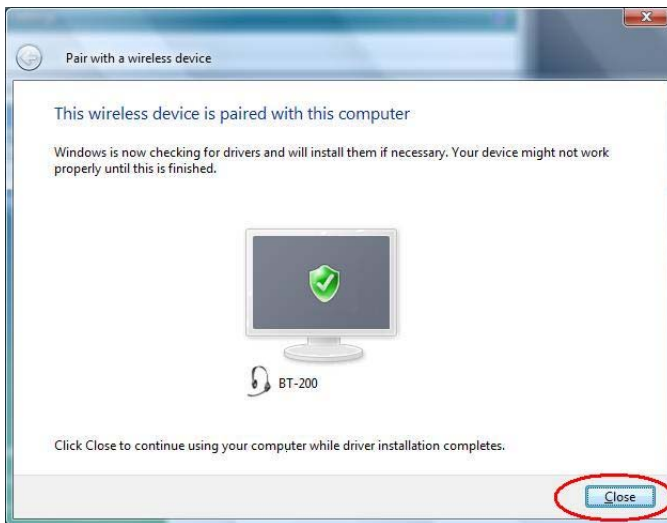
3. Put the BT-200 in pairing mode.
4. Click on “Add Wireless Device”.



5. Click on the BT-200 device



6. Click on "Next".
7. Click "Close".



8. The BT-200 is now installed and ready to use.

Using the BT-200 after Starting the Computer

If you start the computer with the BT-200 turned off, after the computer finishes starting, turn on the BT-200. It will automatically connect within a few seconds and be ready to use.

If you start the computer with the BT-200 turned on, it will not automatically connect. To connect, push the multi-function button on the BT-200. It will automatically connect within a few seconds and be ready to use.